

# Cumbria House



Cumbria House, built at Windermere on the Lake, is the first LEED (Leadership in Energy and Environmental Design) certified house of its size in the Northeast. Located in the historic Long Ridge area of North Stamford, Connecticut, Windermere on the Lake (WOTL) is a 74 acre conservation community with 24 lakeside homes and gardens. The community includes a gatehouse, a field house with a pool, tennis courts, walking trails, and floating dock. Through sustainable design and practices, this community harmoniously blends with the natural environment.

Cumbria House exceeds the requirements for EnergyStar certification with a Home Energy Rating (HERS) of 49 out of 150 (the standard home receives a score of 100, while the minimum for EnergyStar is 85). It also received Forestry Stewardship Council (FSC) certification for the flooring and trims. The home showcases several eco-friendly features, such as low VOC paints, engineered lumber, drought tolerant plants, LED lighting, high efficiency irrigation system, and geothermal HVAC. In addition, 40% of the construction waste was diverted from landfills.

As president of NRDC-Residential, Mark Robbins managed development, construction and design of this home. Bartels-Pagliari Architects designed the home, which is inspired by the designs of the 19<sup>th</sup> century architect, C.F.A. Voysey, a leader in the Arts and Crafts movement. Through the sweeping rooflines, tiered triangles, front-facing courtyard, grand windows, graceful forms, luxurious materials, and outstanding craftsmanship, this home reflects the style of the movement. The team also included the famous British architect Simon Johnson, who designed the gardens and landscaping.

## LEED CERTIFIED HOUSE

Size: 8,000 sq. ft.  
Footprint: 2,500 sq. ft. (4 stories)  
Price: \$2.4 million

Type: Single Family Residence

Address: 19 Ravensglass Drive, Stamford, CT

Developer: National Realty & Development Corp.

Architect: Bartels-Pagliari Architects

Landscape Architect: Simon Johnson

Interior Designer: Karen Houghton Interiors

## SUSTAINABILITY FEATURES

- Direct Exchange Geothermal HVAC
- High Efficiency Propane Heating
- Whole House CO<sub>2</sub> Monitoring
- Energy Recovery Ventilator (ERV)
- Spray Foam Insulation
- Drought Tolerant Plantings
- Water Efficient Fixtures
- PEX Plumbing & FFC Certified Lumber
- Marvin Low-E Windows
- Rain Water Harvesting
- Recycled Flooring & Counters
- Green Seal Carpeting
- Low VOC Paints & Stains
- LED & Low Voltage Lighting

## CERTIFICATIONS

### LEED POINTS: 66.5

Sustainable Sites	10 / 21
Water Efficiency	6 / 15
Energy & Atmosphere	24 / 38
Materials & Resources	5 / 14
Indoor Environmental Quality	9 / 20
Locations & Linkages	4 / 10
Awareness & Education	2 / 3
Innovation & Design	6.5 / 9

### ENERGYSTAR POINTS: 49\*

Home Energy Rating (Hers)

Standard Home: 100 points

EnergyStar Minimum Score: 85 points

\*Out of a possible 150



Side View



Front & Garage View

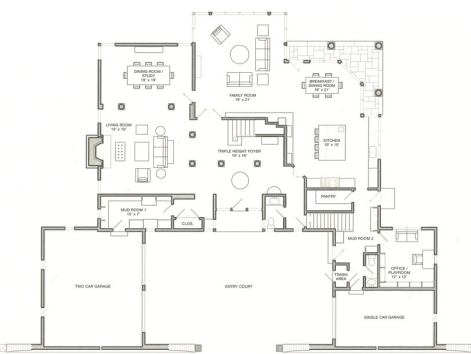


Dining Room

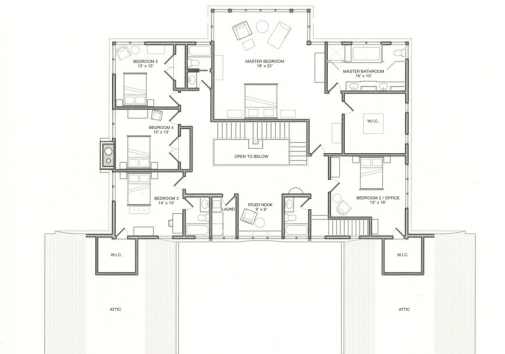


Family Room

## FLOOR PLANS



FIRST FLOOR



SECOND FLOOR



THIRD FLOOR