



SCHOOL SISTERS OF NOTRE DAME (Phase II)



The School Sisters of Notre Dame (SSND) are members of an international congregation of religious women with campuses in 31 countries. Acting on their commitment to environmental stewardship, SSND completed a comprehensive energy efficiency project at their 38-acre campus in Wilton, Connecticut.

The complex includes 200 residential units, a commercial kitchen, a 40-bed licensed nursing facility, a Montessori School, a chapel, offices, and three additional residences.

In addition to a comprehensive energy efficiency upgrade, MHR managed the installation of two solar systems. The Solar Garden, Wilton's first ground-mounted system, will provide 122 kW of power. The second system will be a 37 kW system mounted on the roof of Lourde's Health Care Center. Cumulatively the systems are expected to generate 200,000 kWhs annually.

160 kW
OF POWER GENERATED
BY THE TWO SYSTEMS

.....

50%
LOWER
ELECTRICITY
RATE

.....

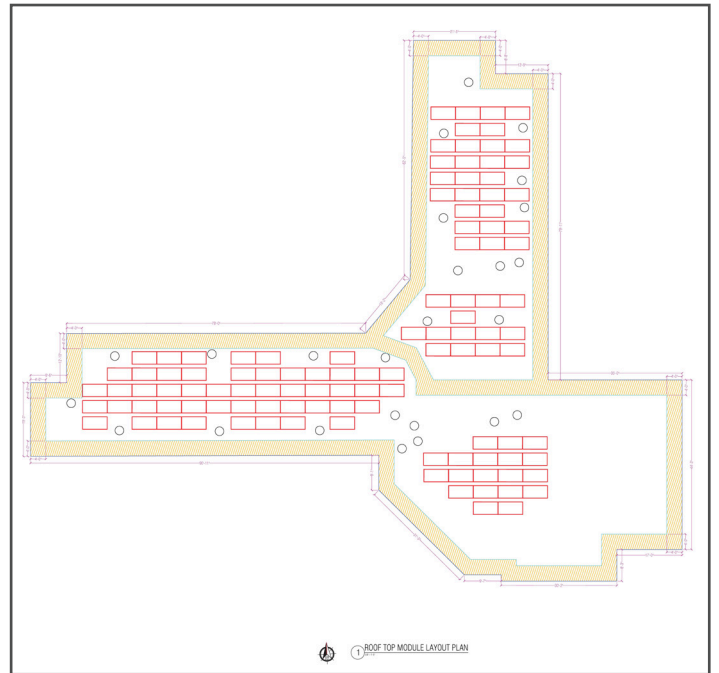


OFFSETTING
200,000 kWh
of grid-fed electricity
annually

PHASE 2: Solar Energy



Ground Mount
122 kW



Roof Mount
37 kW

PROJECT HIGHLIGHTS

- Zero net upfront cost
- Projected average annual savings over \$15,000 (over the term of the PPA)
- Offsets 25% of the facility's electrical load
- No maintenance costs



The properties at the School Sisters of Notre Dame in Wilton were in desperate need of sustainability upgrades. Mark Robbins and his team at MHR Development were with us through every step. From water conservation, LED lighting upgrades, energy efficient boiler plant to solar, we could not have done this scope of a project without MHR.



Tom Antignani
Facilities Manager
School Sisters of Notre Dame